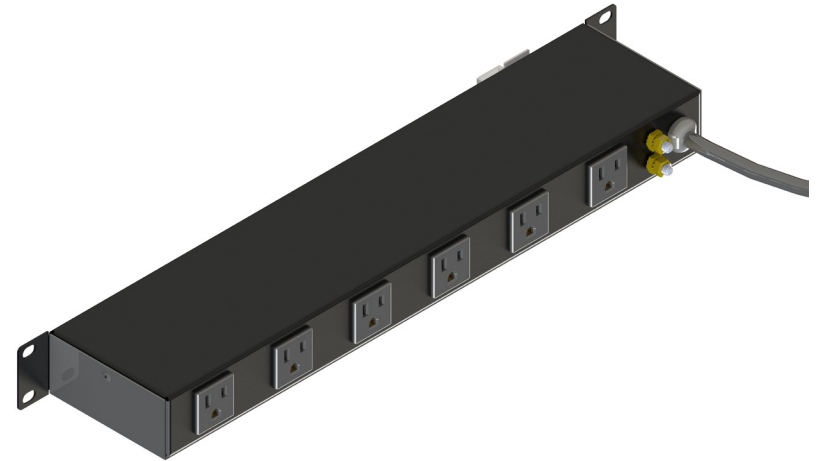


# ACPDU-6N-120SN2-TT

## Silicon Protected AC Rack Mount PDU



Your satisfaction with our product and service is important to us.

If you have any questions, comments or concerns, please contact us at 800.882.9110 or visit our website at [www.Transtector.com](http://www.Transtector.com)

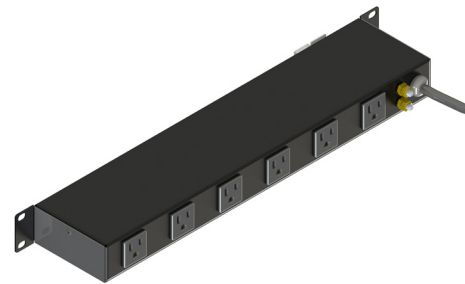
We look forward to continuing to serve your protection needs.

© 2021 Infinite Electronics, Inc. Transtector Systems is a registered trademark of Infinite Electronics, Inc.

+1 (800) 882-9110 | +1 (208) 635-6400 | [www.transtector.com](http://www.transtector.com)



ACPDU-6N-120SN2-TT-M Rev A



### Silicon Protected AC Power Strip

Thanks for purchasing this 100% silicon avalanche diode protected AC rack mount power distribution unit from Transtector.

This PDU is equipped with 6 protected NEMA 5-15 outlets, a 2-in-1 power switch with integral 15A circuit breaker, and a status LED for surge protection integrity.

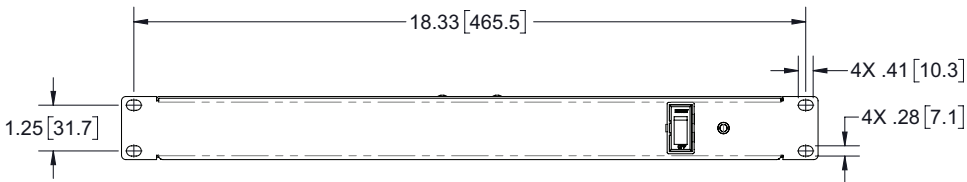
### In The Box

- AC PDU x 1
- User Manual x 1

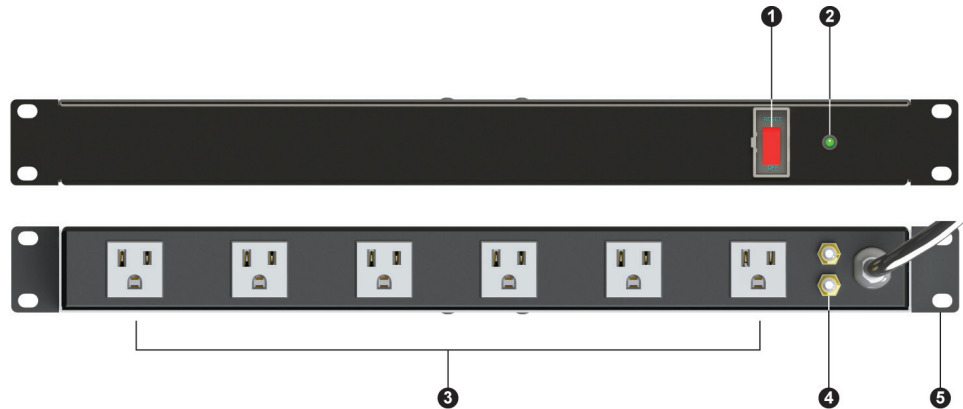
### Specification

Model No.	ACPDU-6N-120SN2-TT
Protected Outlets	6
Electrical Ratings	15A, 120V, 50/60Hz
Voltage Protection Rating	330V
Nominal Surge Rating	3kA 8/20 $\mu$ s
Power Switch	2-in-1 Switch (with 15A Breaker)
Surge Protection Status LED	Green
Grounding	Dual 1/4-20 Studs, .625" center to center

### Mounting



### Product Features



- 1 2-in-1 Power Switch (with 15A Breaker)
- 2 Surge Protection LED Indicator
- 3 6 Protected NEMA 5-15 Outlets
- 4 Dual 1/4-20 Ground Studs
- 5 1U Rack Mounting Ears

### Safety

Read this manual and all warnings carefully before using this product for safety. Inappropriate use or handling could cause electrical shock or physical damage. If the surge protection status LED is extinguished while the power switch is in the 'ON' position and the red LED is illuminated, replace PDU immediately to ensure that equipment remains protected. If the integral circuit breaker in the power switch trips, carefully check all attached loads, then reset breaker. If breaker trips again after all loads have been verified, replace PDU immediately.

### Warnings

- Caution: Reduce the risk of electric shock, follow all warnings.
- Use only indoors with AC 15A, 120V NEMA 5-15 outlets.
- Do not plug into another PDU, relocatable power tap, or an extension cord.
- This device should not be used near water or any other source of moisture.
- Keep out of reach from children.